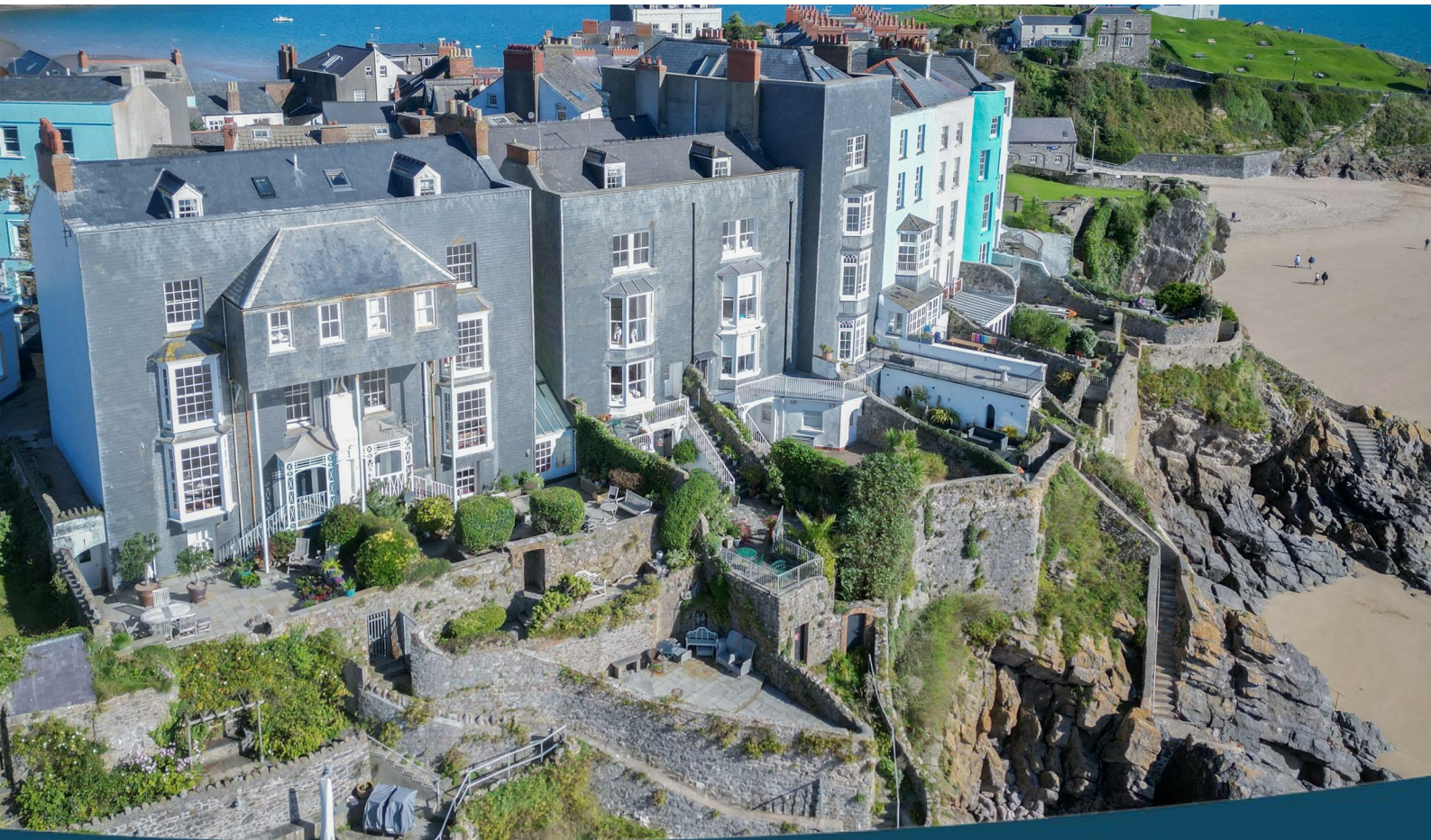




Lock House, St Julian Street, Tenby
Pembrokeshire, SA70 7AS

Telephone; (01834) 842204
Email; sales@birtandco.co.uk

www.birtandco.co.uk



4 Rock Terrace
Tenby
SA70 7BH

£1,400,000

House
Freehold



A rare opportunity to acquire one of Tenby's finest and Grade II* listed seafront homes.

Rock Terrace is situated on St Julian Street, and is set back from the road with a mature front garden set behind iron railings. The rear of the property offers incredible and uninterrupted sea views from inside the property itself, and from the rear cliff-top gardens.

The house is currently set up to offer the basement level as a separate and self-contained apartment.

The property is set over 5 floors, and has a total of 7 bedrooms, 3 bathrooms and 3 reception rooms, and has retained many impressive original features such as ornate coving and ceiling roses. It has the added benefit of an exclusive private garden in the form of tiered terraces built into the cliffs, with steps leading directly to the golden sand beach below.



LOCK HOUSE C. 1750



Regulated by R.I.C.S. Giles Birt, B.Sc., M.R.I.C.S



- **Grade 2* Listed Georgian Townhouse**
- **Separate Basement Flat**
 - **7 Bedrooms**
 - **Large Bay Windows**
- **3 Tiered Terrace Over Beach**
 - **Incredible Views**
 - **Many Original Features**
 - **Direct Beach Access**

Front

The house is accessed via a stone path over a front garden, set back off St Julian Street behind iron railings with a gate. The front garden is lawned, with mature trees and shrubs. There is separate access to basement flat, via a second pathway running alongside the garden from the street.

From the lane at the side of the property, there is access to a stone arched cellar room that was previously a coal store.

Ground Floor

Porch/Hallway 7'6" x 5'10" (2.3 x 1.8)

Enter the property through an impressive timber front door, leading through the porch via glass paned double doors into the hallway.

The entrance hallway leads out to the terrace to the rear, and has the ornate timber staircase leading upwards, with views out to the sea from the half landing's large sash window.

Kitchen/Diner 15'5"x 14'9" into bay (4.7x 4.5 into bay)

A spacious and bright room, with modern kitchen offering centre island and integrated appliances. There is a large sash window to the front of the house, looking out to the garden and space for dining table, with additional bench seating in a recessed archway.

The room has original ornate covings, and a tall radiator. Steps lead to a door to the pantry and WC, and the room opens to adjoin the lounge.

Pantry 6'6" x 7'10" (2 x 2.4)

A practical extension of the kitchen/diner, the room has worktop space and storage with built in cupboards, and lots of natural light from the windows above.

Door leads to WC.

WC 6'2" x 3'11" (1.9 x 1.2)

A downstairs cloakroom with WC, wash hand basin, and window to the front.

Lounge 15'8" x 18'0" into bay (4.8 x 5.5 into bay)

A fantastic room with incredible sea views, boasting original marble fireplace and large bay window with wooden shutters. The lounge also features intricate original coving and ceiling rose.

First Floor

Lounge 15'8"x 17'8" into bay (4.8x 5.4 into bay)

Directly above the lounge below, the room also has a large bay window with incredible sea views to the rear plus an original fireplace. The room could be used as an impressive bedroom.

Bedroom Two 15'1"x 14'9" into bay (4.6x 4.5 into bay)

A spacious double bedroom with fireplace, radiator and a large bay window with shutters to the front, looking out to St Julian Street.

Bathroom 8'6" x 10'2" into bay (2.6 x 3.1 into bay)

Good sized bathroom with timber floor, and bay window to the front with wooden shutters. Room comprises bath, pedestal sink, WC, and radiator.

Bedroom Four 11'1" x 6'6" (3.4 x 2)

A single bedroom on the half landing, offering two sash windows to the rear with wonderful sea views, plus loft hatch with access to a small storage space above.

Second Floor

Bedroom One 15'8"x 15'8" into bay (4.8x 4.8 into bay)

An impressive double bedroom with built in wardrobes, original fireplace, and large bay window with shutters, providing spectacular sea views over the rear garden.

Bedroom Three 14'1" x 14'5" into bay (4.3 x 4.4 into bay)

Currently used as an office, this spacious bedroom has a bay window to the front, with original fireplace.

Shower Room 9'1" x 10'5" into bay (2.79 x 3.2 into bay)

Good sized shower room with a bay window with shutters to the front, corner shower enclosure, pedestal sink, WC, wooden flooring and a radiator.

Third Floor

Bedroom Five 19'4" x 15'5" max (5.9 x 4.7 max)

An attic bedroom with pitched ceiling and eaves storage, two Velux windows and additional sash window to the rear (giving access to the parapet). There is a built-in storage cupboard plus hatch to loft above.

Utility Room

Accessed via either an internal staircase, or from the basement flat, the room has space and plumbing for washing machine and tumble dryer with worktop, sink, and storage shelves above.

Bathroom 7'10" x 7'6" (2.4 x 2.3)

Top floor bathroom comprising bath, WC, pedestal sink, with pitched ceiling, eaves storage, and Velux window.

Basement Apt

The lower level of the house is currently set up as a modern and self-contained letting unit, which has been very popular and successful. It has separate access from the street, and use of the top terrace to the rear, accessed from the kitchen/diner.

Kitchen/Diner 28'6" x 6'10" max (8.7 x 2.1 max)

A bright room with timber glass paned entrance door into a porch area, with steps down. The room has oak flooring, pitched glassed paned roof over the dining area to the rear.

The kitchen has a range of units and integrated appliances, with feature exposed brickwork, and doors opening out to the patio terrace.

Lounge 14'5" x 13'5" max (4.4 x 4.1 max)

A cosy sitting room with sash window to the front with window seat, ceiling spotlights, and a radiator.

Bedroom One 12'1" x 12'1" (3.7 x 3.7)

A good sized double bedroom with sash window to the front, window seat, and storage cupboard.

Bedroom Two 10'2" x 11'5" imax (3.1 x 3.5 imax)

A second double bedroom with window to the rear, ceiling spotlights, and a radiator.

Shower Room 8'7" x 3'11" (2.64 x 1.2)

A modern and fully tiled shower room, comprising shower cubicle, WC, pedestal sink and heated towel rail.

Rear Terraces

The rear garden comprises 3 terraces overlooking the South Beach. Each terrace has patio slabs and there are a variety of mature trees and shrubs.

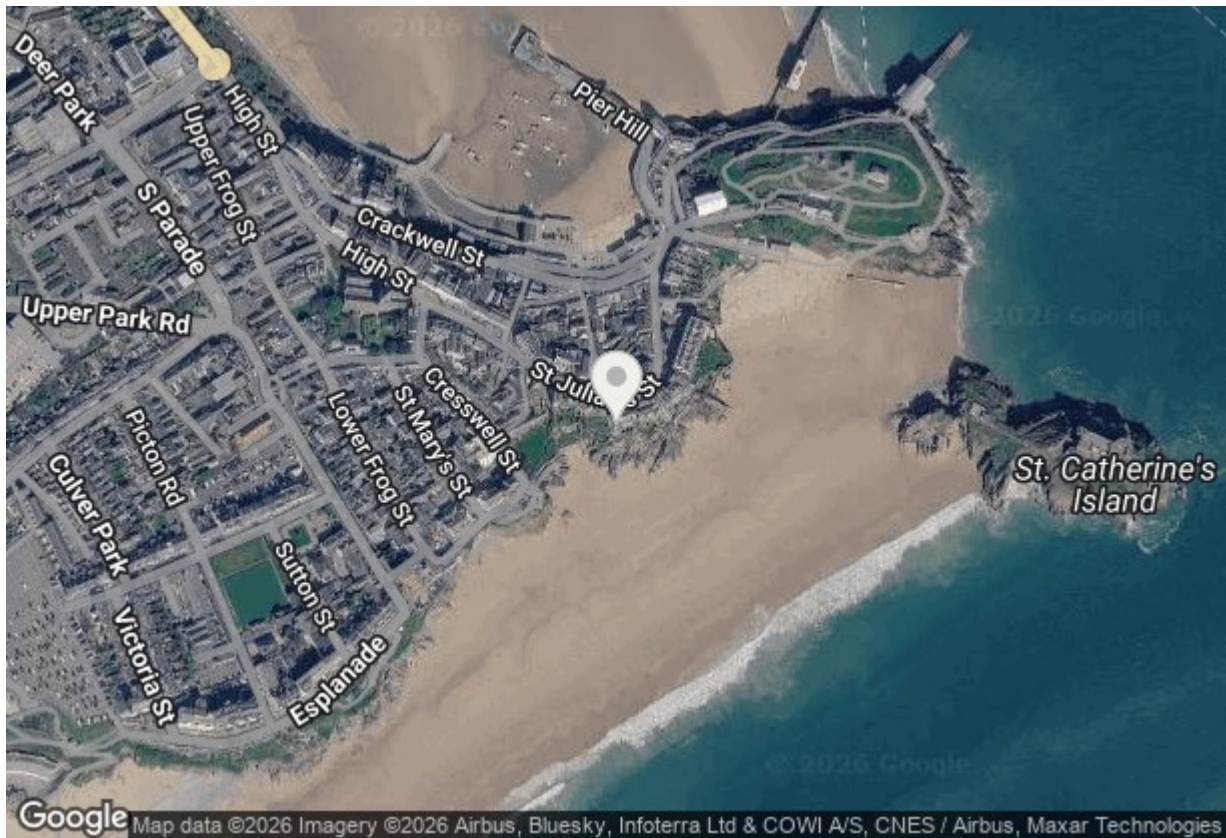
The bottom terrace juts out along the shape of the cliff, providing a good-sized patio terrace, enclosed with a stone wall. The terrace gives spectacular views out across the length of South Beach to Caldey Island and Giltar Point.

There is direct beach access via a communal set of steps that is shared with the other properties on Rock Terrace.

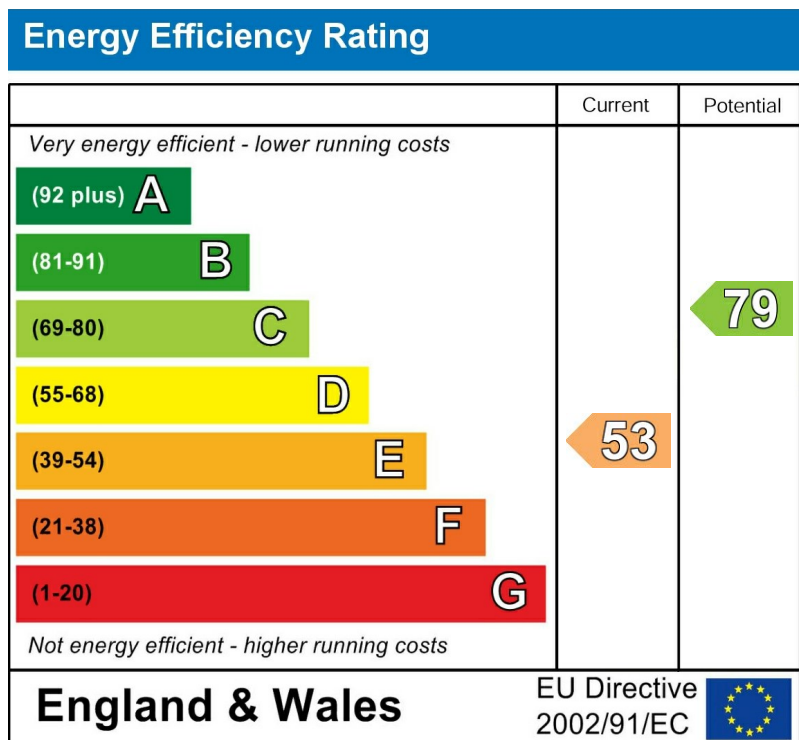
Please Note

The Pembrokeshire County Council Tax Band is I - approximately £5143.22 for 2026/27.

There are 2 EPC ratings for the property; the house itself (E - 53/79) and the basement apartment (D - 68/78).

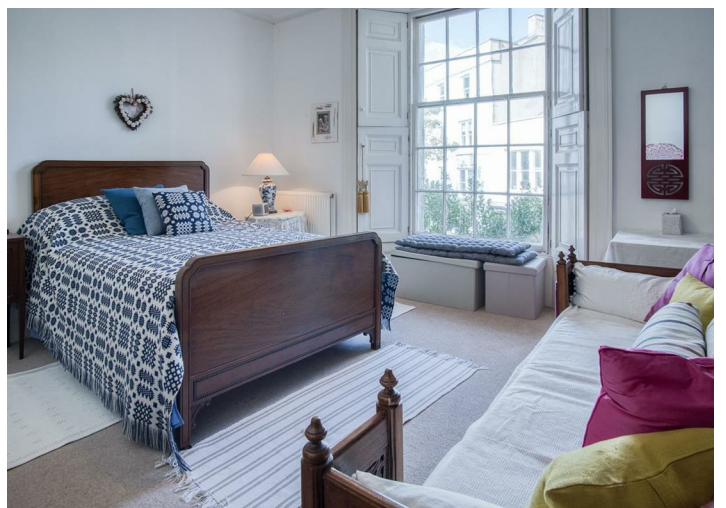
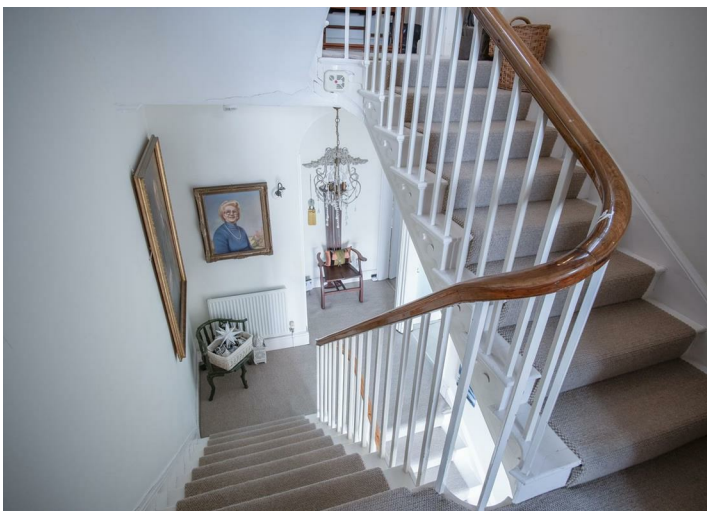


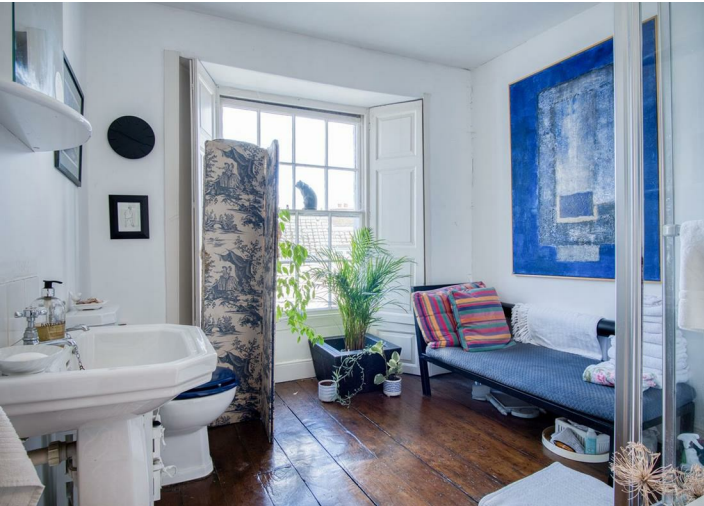
From Tudor Square, follow St Julian Street towards the Harbour and the Rock Terrace is on the right-hand side. Number 4 is one of the 2 blue properties set back behind iron gates with a mature front garden.











Floor Plan



TOTAL FLOOR AREA : 3412 sq.ft. (316.9 sq.m.) approx.

Measurements are approximate. Not to scale. Illustrative purposes only
Made with Metropix ©2024

These particulars, whilst believed to be accurate are set out as a general outline only for guidance and do not constitute any part of an offer or contract. Intending purchasers should not rely on them as statements of representation of fact, but must satisfy themselves by inspection or otherwise as to their accuracy. No person in this firm's employment has the authority to make or give any representation or warranty in respect of the property.